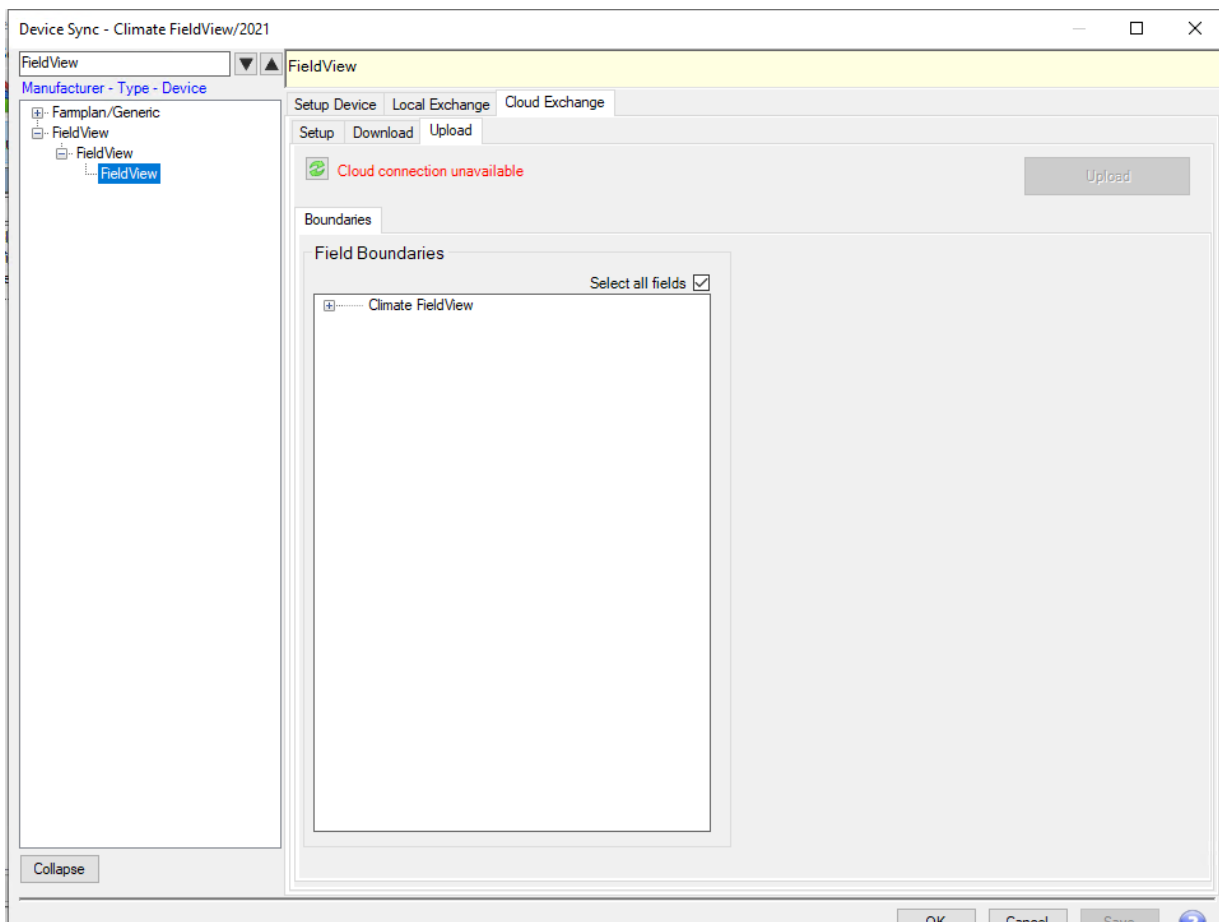


# Release notes version 4.16.2

## Climate FieldView Integration

This update introduces cloud integration with the Climate FieldView API. It will allow customers to export fields and boundaries to their FieldView account inbox, and with the relevant Gatekeeper modules import fields and data from FieldView.

This development reflects the demand from our mutual customers who are looking to work with cutting edge crop optimisation tools alongside Gatekeeper and recognises the exciting opportunities that FieldView provide. By allowing data to be exchanged, farmers will be able to streamline their processes and drive added value from their platforms and ultimately their farm.



Field boundaries can be uploaded from Gatekeeper to the FieldView inbox. Gatekeeper users with the relevant modules are able to download and import yield and as-applied data from FieldView.

Additional information on connecting with FieldView is available in our [e-learning hub](#).

To celebrate the new integration, Climate are providing an accessible route for those growers looking to take up or add to their Gatekeeper license to enable the full data exchange process. Please speak with the Farmplan team for more information.

## **Microsoft .NET Framework 4.8 Update**

With the introduction of the integration with FieldView it has been necessary to update the base framework of Gatekeeper. All Gatekeeper users now require Microsoft .NET Framework 4.8 to be installed.

To ensure that your operation of Gatekeeper is uninterrupted please check that your Windows updates are completed, or [click here](#) to download and install .NET Framework version 4.8.