



Farmplan
livestock

Livestock Manager

Enhancements - Version 1.45
Autumn 2021

Proagrica

Contents

Installation Instructions	3
Version 1.45 – Autumn 2021	5
*Cattle Manager Go – Mobile App	5
ScotMoves +	6
Passports Received/Returned.....	6
Home Page - Help & Support	6
Home Page - Cattle Status.....	7
Dunbia – Movement Declaration Form.....	7
*Dunbia – Import Slaughter Details	7
Woodhead Brothers (Morrisons) – Updated Cattle Declaration Form.....	8
CTS Official Breeds	8
Scottish Beef Scheme	8
Northern Irish Tag formats.....	8
Medicine Book – Filter by Product Type.	8
*Feed Rations – Cease on Death or Sale	9
*PD Scanning/Listing Report – export to Excel.....	10
*Cattle Inspector – Additional Fields.....	10
BES Culls and Deaths report – Filter by Culls or Deaths.....	11
*Batches/Herds – Print.....	12
Planned Sales – sort by withdrawal period.....	12
*TruTest XRS2 Stick Reader	13
*Import from a Stick Reader – Read from a File	13



Installation Instructions

Windows 8, Windows 10 and Windows 11 Operating Systems only.



***Please note** – Windows 7 and Windows Server 2008 are no longer supported by Microsoft and, as such, pose a security risk. This version of Livestock Manager **will not install** onto machines that still use this operating system. Any data that needs to be fixed by our support team will be updated using this version so it is important that you upgrade, or you may lose access to your data. Please contact Farmplan to discuss upgrading your PC if this is applicable.

- Before you start, ensure that you have read about the enhancements.
- You will not be able to load this version of the program if your licence has expired. If you are getting messages telling you that your licence has expired but you have renewed your contract, take the option **File – Licence – Get Key** BEFORE you load this version of the program.
- Remember to make an up-to-date backup of your Livestock Manager data.
- The option to install the latest version of the program can be found under **Livestock** in the **Support & Downloads** area of the Farmplan website (www.farmplan.co.uk). You will need your customer number.
- Make sure that all Farmplan programs are closed.
- Follow the on-screen instructions to **‘Download’**. The exact procedure will vary according to the version of Windows and browser that you use but just follow the instructions on the screen. You will download a file called **setup.exe**, supplied by Reed Business Information (our parent company), which should then be ‘Run’.
- If Windows SmartScreen (a warning message) appears to block the installation, click on **More Information** and then **Run Anyway**.
- A black box may appear on your screen during the installation. Ignore it – it will disappear when the installation is complete
- If you encounter any installation issues it is worth repeating the installation process by right clicking on the setup.exe file and running as administrator.
- When the installation is complete go into the program – your data will be automatically updated to run with the new version (1.45) of the program.

Version 1.45 – Autumn 2021

This document contains a summary of all changes that have been made since the last major update of the program. Please note that full details of each change to this version of the program can be found in the option **Help – Version 1.45 – Autumn 2021**. If you would like help or more information about any of the changes in the program, please contact our Software Support team on 01594 545022.

Please note that any enhancement marked with a * is not available in Cattle Focus

*Cattle Manager Go – Mobile App



We are excited to announce that Farmplan has developed a mobile application that will run as a companion to your main desktop program on a wide range of mobile phones and tablets. It is compatible with most Android and iOS devices and can be downloaded from the appropriate App store free of charge.

Information about your animals can be synchronised to a message store, i.e. in the Cloud, and then downloaded onto your mobile device which can then be accessed offline.

Business Name – check that this is the required data. If you have more than one business linked to these log in credentials then go to **Select Business** to change to another business.

View Cattle Records – Use this option to search and view the animal record card of individual animals. Births can be entered from the Kin screen of the dam.

Record Diary Entries – This option will allow you to record entries against the pre-set list of Actions sent from the main program.

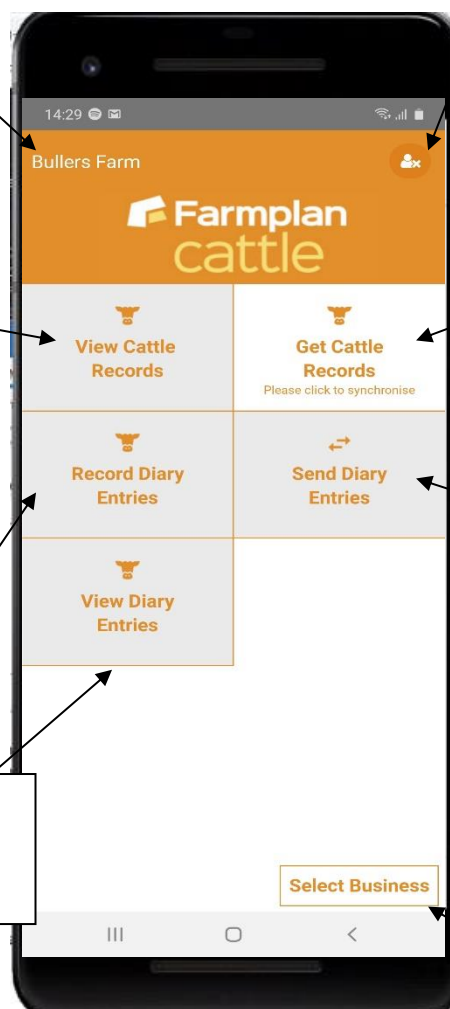
View Diary Entries – Look up any diary entries and filter them by Action type and/or date

Settings – use this button to log out of the app. Take care that all outstanding entries have been synchronised or you will lose them. It is normally not necessary to log out unless you have more than one set of log in credentials

Get Cattle Records – to synchronise the App with the latest details held in the Message Store in the Cloud. Ensure that any outstanding Diary Entries have been uploaded first.

Send Diary Entries – Once Diary Entries and Births have been recorded they can be sent back to the Message Store in the Cloud so that they can be read back into the main program when you are back at your desk.

Select Business – If you have more than one business associated with these log in details then you can change to another business using this option. Remember to update any outstanding Diary Entries first.



View the record card for any animal and record births and enter a wide range of actions such health treatments, weighings, movements etc. while out on farm without the need to be in range of a Wi-Fi or phone signal.

When you are back in range of a signal, simply upload any recorded actions back to the Cloud where they can be downloaded into your main program. The mobile data can then be refreshed ready to go out on farm again with the most up to date information about each animal.

Full instructions are provided in the separate **Cattle Manager Go manual** and can also be found in the **Help** options within the program. Please read them before you download the app.

ScotMoves +

From 4th October 2021, all births, deaths and movements in Scotland must be notified to ScotEID instead of through BCMS. The new system is known as ScotMoves + and builds on the existing ScotMoves system which was introduced in 2017 and covered movements within the same business.

If you have holdings in Scotland, you should ensure that you are registered with ScotMoves so that you are ready for the changeover.

Once you made a few changes to your data, the way that the reporting is handled is largely the same within Cattle/Livestock Manager apart from the fact that you will use the option to Notify ScotMoves instead of BCMS.

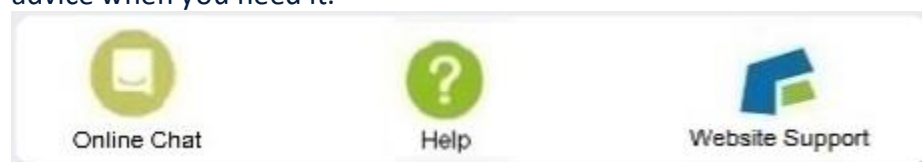
IMPORTANT - Please read the separate **ScotMoves + Instructions** carefully as there are a few steps that you must take to transfer over from BCMS to ScotMoves. These notes are also available on our website (www.farmplan.co.uk) and from the program's help options. You will be unable to send any notifications to CTS/BCMS from 4th October.

Passports Received/Returned

This option has now been moved from the BCMS option to its own menu option under Entries and will cover all passports in any area of the UK.

Home Page - Help & Support

We have updated the Help & Support section of the Home Page to make it even easier to access advice when you need it.



Use the **Online Chat** button to talk to one of the Support Team. When you click on it you will be taken to our website. Use the button in the bottom right hand corner of the screen to start a live chat with one of our advisors who are available between 8am and 5pm, Monday to Friday.

The **Help** button will open up the in-program help so that you can search for the answers to any questions that you may have. Of course, this option is also available from any screen.

Finally, the **Website** button will take you to the Support area of our website where you can find a large selection of FAQs and articles.

Home Page - Cattle Status

The layout of the Cattle status has been rearranged to show all notifications and validations on the same line. ScotMoves notifications are also shown if the business has Scottish holdings.

Cattle status	Births	Movements	Deaths
CTS notifications:	No births to notify	4 movements to notify	2 deaths to notify
CTS validations:	None outstanding	None outstanding	None outstanding
ScotMoves notifications:	No births to notify	No movements to notify	No deaths to notify
Passports:	All passports received		12 passports to return
Planned movements:	No sales overdue	No movements overdue	

Dunbia – Movement Declaration Form

It is now possible to print out the Movement Declaration Form in the correct format required by Dunbia. There are 2 variations of the form – the standard one and one for Aberdeen Angus cattle.

The Movement Declaration or Food Chain Information form can be printed from the **Report Library – Planned Movements – Dunbia Declaration** and is based on animals that have been entered for a **Planned Sale**.

*Dunbia – Import Slaughter Details

In addition, the program now contains the option (**File – Import/Export Wizard**) to import kill data directly from Dunbia in the form of a csv file that it can be matched to a previously entered sale. It will automatically match the kill data such as lot number, price dead weight and conformation details.

NB remember to record the sale first and tick the ‘sold for slaughter’ box. ABP Movement Declaration Forms

We have also added 5 different variations of the ABP Food Chain Information report since the last main update to the program – also available from the **Report Library – Planned Movements** after entering a **Planned Sale**.

Woodhead Brothers (Morrisons) – Updated Cattle Declaration Form

The layout of the Woodhead Brothers Food Chain Information report (cattle) has been updated to reflect the new wording on the declaration. The Turriff form is no longer applicable.

CTS Official Breeds

The available breeds' list has been updated to reflect changes by BCMS.

Scottish Beef Scheme

The validation rules that determine which animals are eligible for the Scottish Beef Scheme have been updated to restrict selection to qualifying animals born on or after 02/12/2014.

Northern Irish Tag formats

Northern Irish tags are presented in the format UK 9 hhhhhh nnnnn c, where h is the herd mark, n is the unique animal number and c is the check digit.

Official tag: (NI)					
UK	9	123456	5691	4	

The check digit may now be one of 2 numbers to accommodate larger herds. The program has been adjusted to allow for either number when it is validated.

Medicine Book – Filter by Product Type.

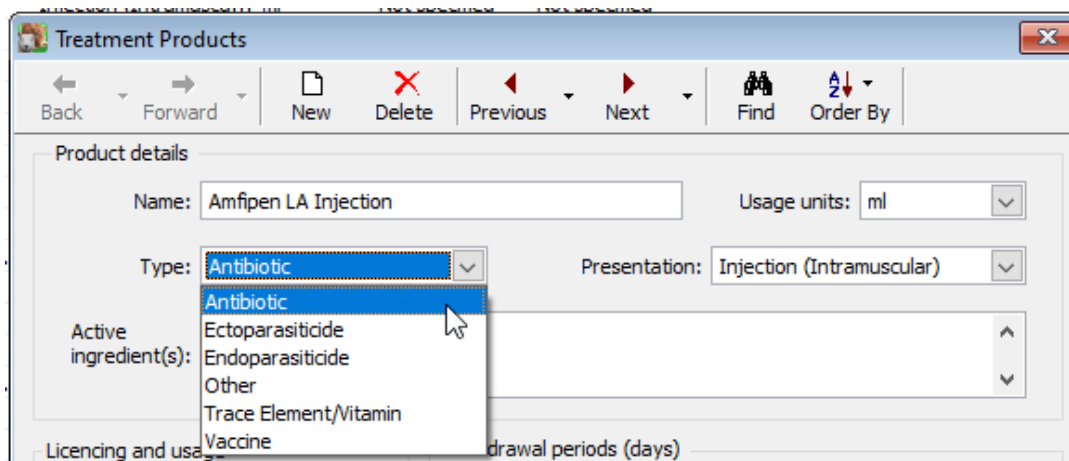
Both the SAI Global/FABBL Medicine Record Book and the NOAH Animal Medicine Record Book can now be filtered by product type, e.g. to demonstrate antibiotic usage over a particular date range.

The screenshot shows the 'Report Library' window for the 'NOAH Animal Medicine Record Book'. The interface includes several filtering sections:

- Order animals by:** A dropdown menu set to 'Name of medicine' and a checkbox for 'Reverse order'.
- Filter by date treated:** A section with 'Select a date range:' containing a dropdown for 'Previous Year', and 'between:' and 'and:' fields with date pickers set to '01/01/2020' and '31/12/2020'.
- Filter by date of birth:** A section with 'Animals born between:' and two date pickers.
- Showing:** Radio buttons for 'Current animals only' (selected) and 'All animals'. A dropdown for 'Animal types to include:' is set to 'Cattle only'.
- Product type:** A dropdown menu with a list of options: '<All product types>', 'Antibiotic', 'Ectoparasiticide', 'Endoparasiticide', 'Vaccine', 'Trace Element/Vitamin', and 'Other'. The 'Antibiotic' option is currently selected.
- Animal Filters:** A tree view on the right with expandable sections: 'Cattle Categories' (containing 'Young Stock', 'Store/Finishing', 'Breeding Stock', 'Culls'), 'Locations', 'Cattle Breeds', 'Groups', 'Sales', and 'Sires'.

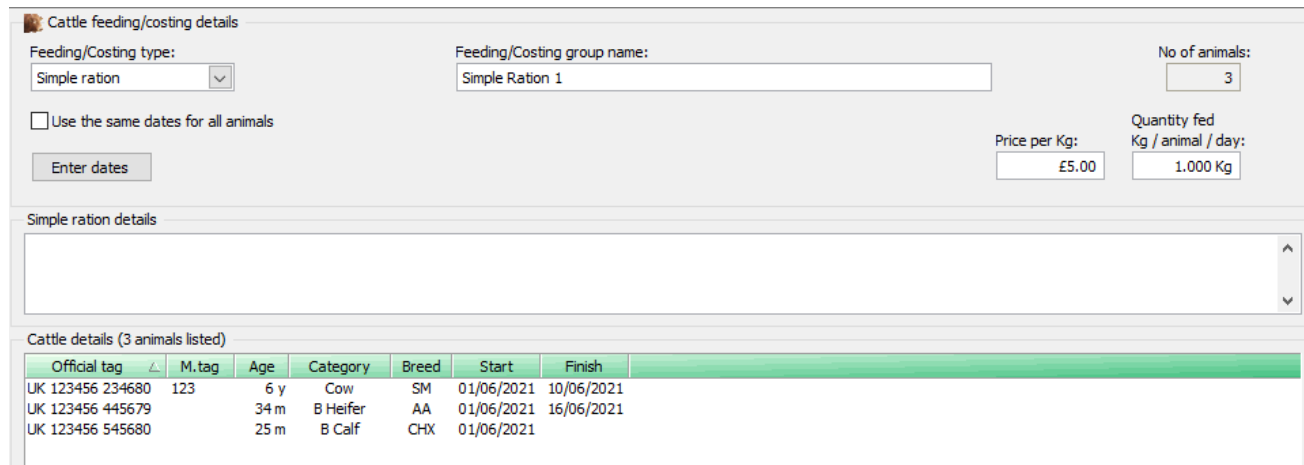
At the bottom of the window are buttons for 'Preview', 'Print', 'Export', '< Back', and 'Close'.

The product type is allocated to each product as they are created and can be amended in **Setup – Treatments – Treatment Products**.



*Feed Rations – Cease on Death or Sale

The **Feeding and Costings** option has been adjusted so that rations or costings automatically stop at the point of sale or death of each individual animal, even when it is split evenly amongst a group and has not reached the original ration end date. It is no longer necessary to make a manual adjustment.



This is reflected in the **Performance Reports – Costings and Financial Margin** reports found in the **Report Library**.

Full costing details during the lifetime on each animal during its time on your farm can also be found in the **Animal Record Card – Costings**.

*PD Scanning/Listing Report – export to Excel

It is now possible to export the PD Scanning/Listing report to Excel – see **Reports – Report Library – Calvings – PD/Scanning – PD/Scanning Listing**. This will give a list of all animals in a particular scanning group including their due date.

Animals scanned on 28/06/2021					
Grouped by scanning result					
Ordered by official tag					
Scanned as a Single					
Official tag	Mgmt tag	Category	Breed	Date served	Date due
UK 658256 323369	369	B Heifer	HE	28/04/2021	05/02/2022
UK 658256 523371	371	B Heifer	HE	28/02/2021	08/12/2021
UK 658256 623372	372	B Heifer	HE	14/04/2021	22/01/2022
3 Scan results listed					
Scanned as Twins					
Official tag	Mgmt tag	Category	Breed	Date served	Date due
UK 658256 423370	370	B Heifer	HE	27/04/2021	04/02/2022
Empty 0		Singles 3		Twins 1	
					Scanning percentage 125%

*Cattle Inspector – Additional Fields

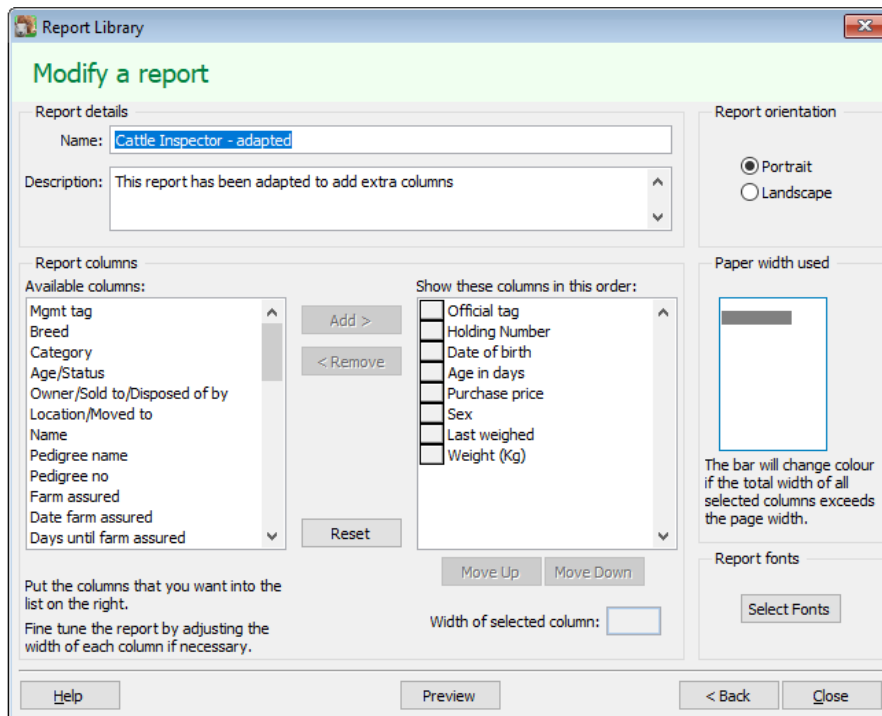
A number of additional columns can now be added to a customised version of the Cattle Inspector report – found in the **Report Library – General Reports – Cattle Inspector**.

New columns include:

- Age in days
- Number of days on farm
- Sex – i.e. M or F
- Last weight
- Last date of weighing
- Holding Number
- Purchase Price

To add your own customised version of the Cattle Inspector report select the **New** option at the bottom of the screen.

This powerful tool will allow you to select the columns that you require on a report which can then be filtered and sorted in the normal way.



Full instructions can be found in the program's **Help**.

BES Culls and Deaths report – Filter by Culls or Deaths

This report (**Report Library – Beef Efficiency Scheme – BES Culls and Deaths**) lists all disposals along with the reason and is available to all users, not just those who require it for the Beef Efficiency Scheme. It can now be filtered to differentiate between deaths and sales of culls.

**BES cull and death reasons report
for records since 1st January 2016
For the period 01/06/2019 to 31/12/2021
Grouped by disposal reason and ordered by official tag**

Disposal Date	Disposal type	Official tag	Mgmt tag	Breed	Category	Age when left farm	Reason
AG - Old age							
17/06/2019	Sale	UK B2445 00821	832	CHX	Cow	13 y	AG - Old age
17/06/2019	Sale	UK M1633 00382	827	BSH	Cow	14 y	AG - Old age
17/06/2019	Sale	UK U3528 00577	839	CHX	Cow	16 y	AG - Old age
3 animals listed							
IF - Infertility							
16/06/2021	Sale	UK 543212 400006	3448	CH	Cow	7 y	IF - Infertility
1 animals listed							
ID - Injury							
04/06/2019	Death	UK 124355 575653	R265	HEX	S/F Steer	6 m	ID - Injury
17/06/2019	Sale	UK 685228 587878	831	BSH	Cow	13 y	ID - Injury
2 animals listed							
TY - Poor type							
16/06/2021	Sale	UK 123456 445679		AA	B Heifer	33 m	TY - Poor type
1 animals listed							

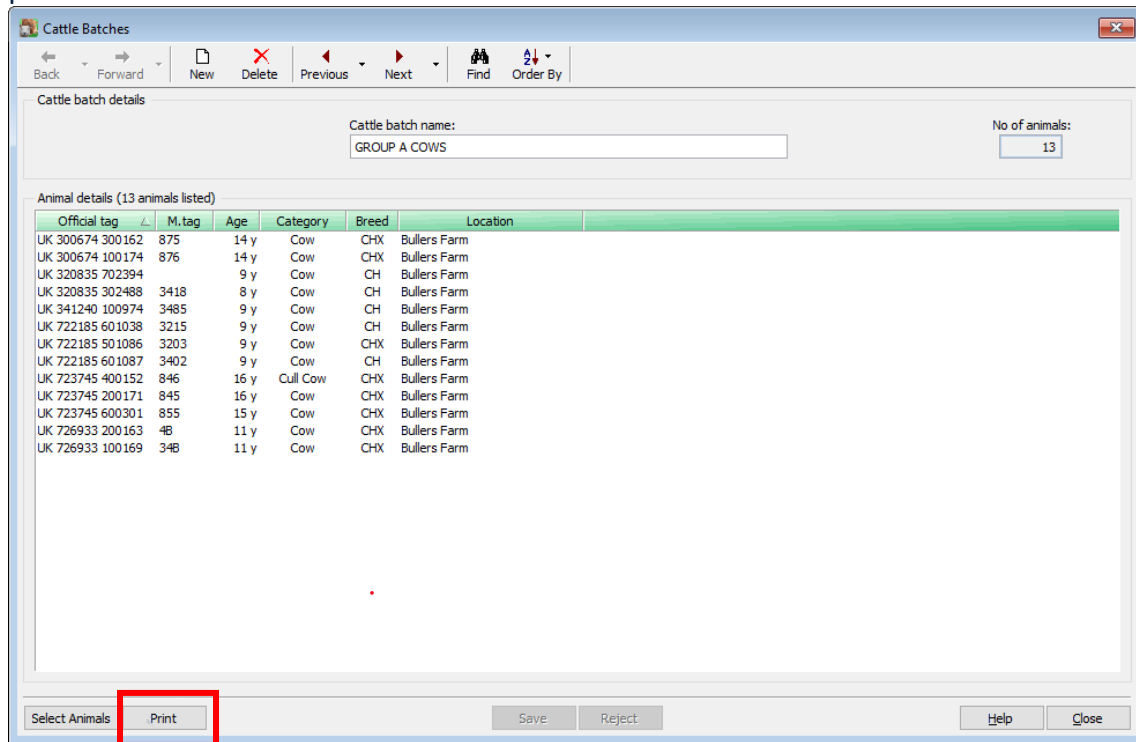
Note the reason for cull or death is applied to each animal in the appropriate movement record.

Sale details (3 sale details listed)											
Order	Official identity	Age	Category	Br...	Lot no	Price	Live Wt	Dead Wt	KO %	Grade	Reason for Sale
1	UK 543212 400006	7 y	Cow	CH							IF - Infertility
-	UK 123456 145690	24 m	H Calf	AA							PN - Pneumonia
-	UK 123456 445679	33 m	B Heifer	AA							TY - Poor type

*Batches/Herds – Print

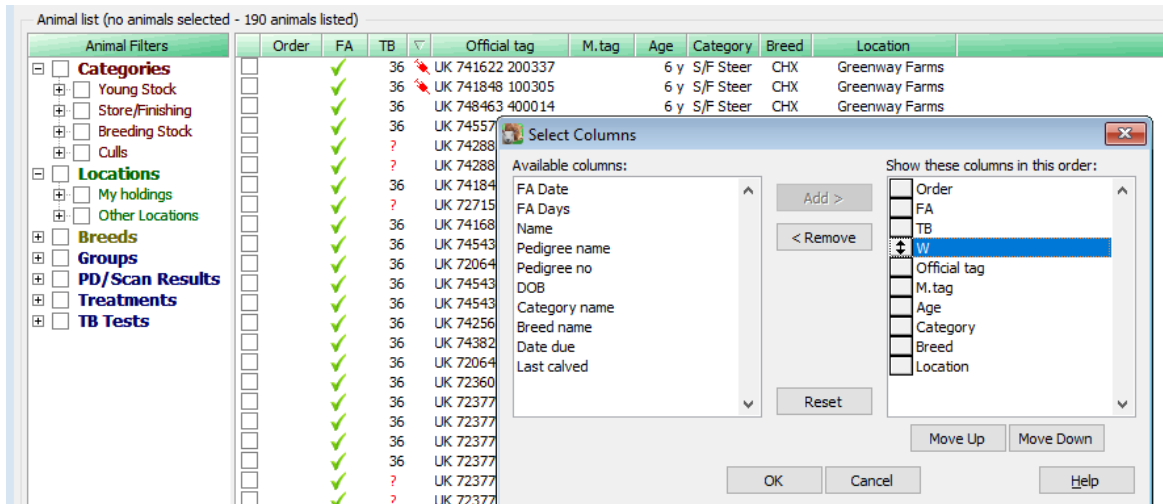
Creating ad hoc batches and allocating animals to them is a useful tool for grouping cattle together for the purposes of producing filtered reports or allocating them en-masse in a movement or treatment. Each animal can belong to as many batches as required but only one herd.

It is now possible to print a list of animals directly from the **Setup – Batches/Herd** screens using the print button at the bottom of the screen.



Planned Sales – sort by withdrawal period

If you wish to be able to sort potential animals in the **Select** screen by W – i.e. in a withdrawal period but find that it does not currently work, simply right click on the green heading bar and **Select Columns**. Unselect (remove) the W column and reselect it (add) to force a save of this screen and it will now allow you to click on the column heading to sort them.



*TruTest XRS2 Stick Reader

The program is now compatible with the TruTest XRS2 Stick reader to capture EID tag details out on farm. Use the option **Tools – Options – Stick Reader** and select TruTest stick reader.

*Import from a Stick Reader – Read from a File

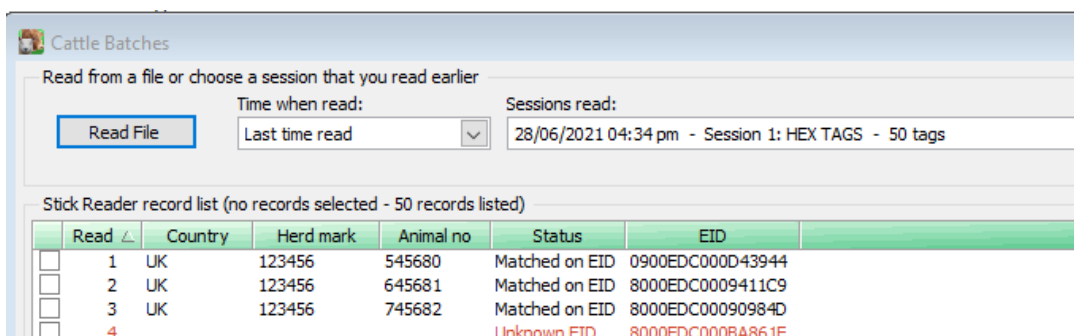
We have added the option to import EID tags from csv file instead of directly from a Stick Reader.

If your stick reader does not appear in the list **Tools – Options - Stick Readers**, or the configuration of your stick is not compatible with those in the list, it is now possible to import EID tags directly from a csv file which may be generated within the software that comes with your stick. There is now an additional option in the list called '**Read from File**'.

The file should be saved in a simple csv format with one column of hexadecimal electronic references.

	A
1	0900EDC000D43944
2	8000EDC0009411C9
3	8000EDC00090984D
4	8000EDC000BA861F

You will be asked for the location of the file when you select the stick reader option in any of the movements, treatments, batches etc screens when you select animals.



These will then be matched to any corresponding EID references allocated to your animals.

Farmplan Computer Systems
Alton House
Alton Road
Ross-on-Wye
Herefordshire
HR9 5BP

Phone: 01594 545022
www.farmplan.co.uk

support@farmplan.co.uk